

Scott County

2008 Population: 24,130*

Gender Distribution:

- Male - 48.2%
- Female - 51.8%

Ethnic Distribution:

- White - 98.4%
- Black - 0.8%
- American Indian - 0.1%
- Asian - 0.1%
- Native Pacific Islander - 0%
- Other - 0.5%
- Hispanic (of any race) - 0.6%

* Estimate

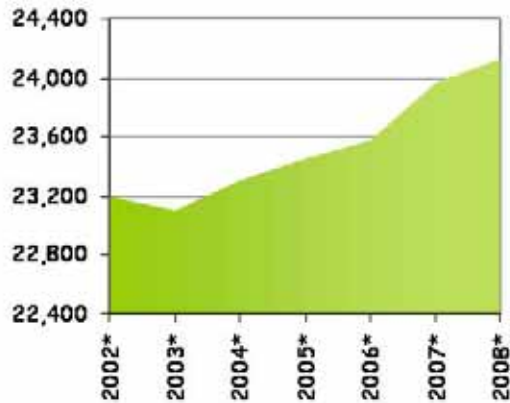
Marital Status (Ages 15+):

- Never Married - 16.9%
- Married - 62.6%
- Separated/Divorced - 10.0%
- Widowed - 10.5%

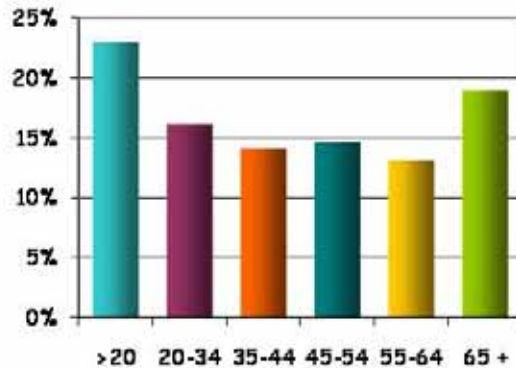
Households:

- Families - 71.7%
- Families w/ Children - 30.2%
- Living Alone - 26.1%

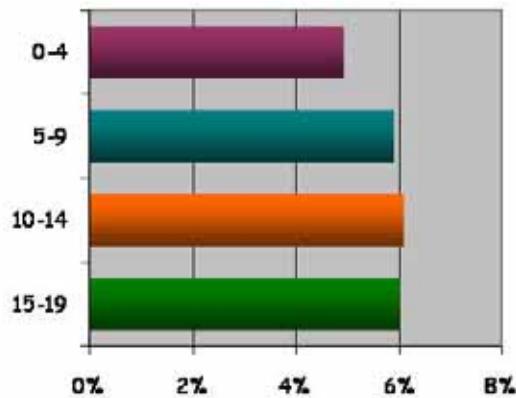
Population



Distribution by Age



Distribution by Age (Under 20)



Scott County

www.scottcountyva.com

Summary of Southwest Virginia

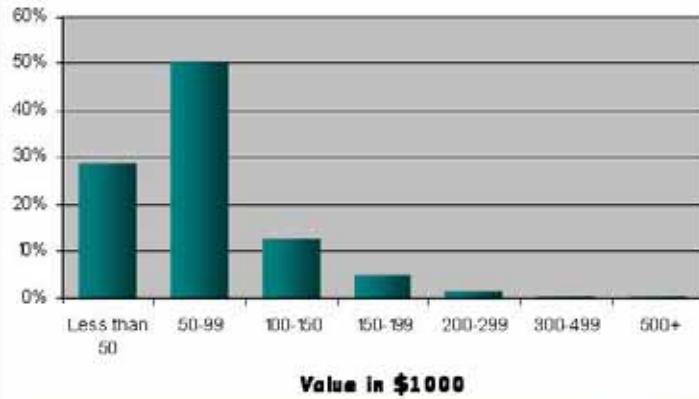
Housing:

Occupied Housing - 86.3%
 Occupied by Owner - 78.2%
 Occupied by Renter - 21.8%
 Vacant Housing - 13.7%
 For Recreational User - 2.6%

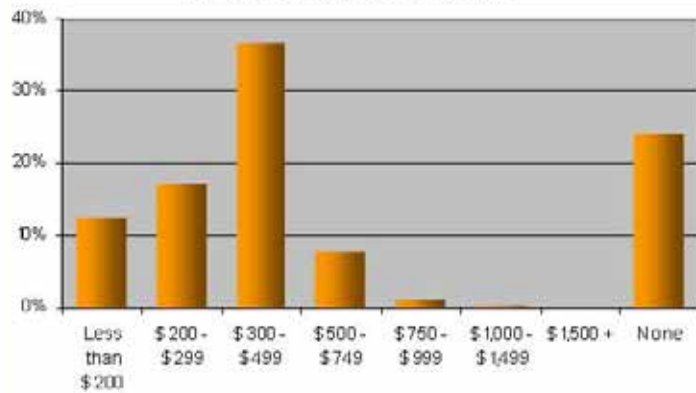
Median Home Value - \$69,100
 Median Monthly Rent - \$335

Median Ownership Costs - \$659
 (with a mortgage)
 Median Ownership Costs - \$179
 (without a mortgage)

Scott County: Home Value



Scott County: Monthly Rent



Cost of Living Index - 1st Quarter 2009



On the Cost of Living Graph, the National Average is set to zero. The numbers on the horizontal axis represent the percent difference in the cost of an item in the region versus the National Average cost.

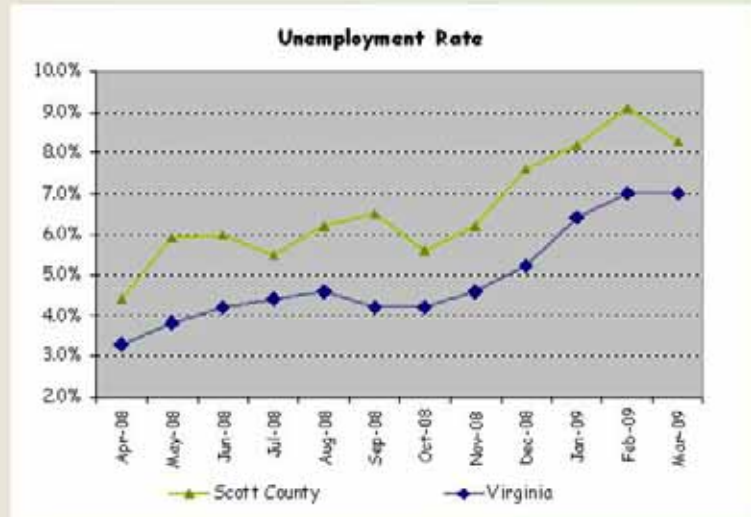
* The closest reporting metro area

Scott County

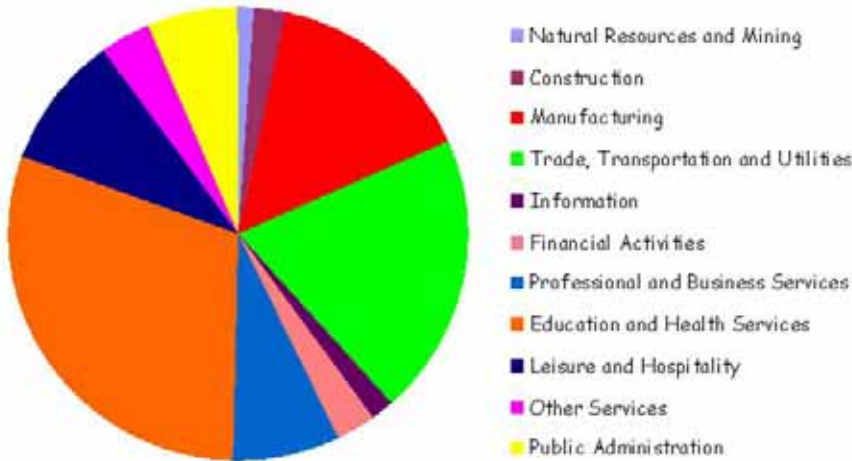
www.scottcountyva.com

Civilian Labor Force
(March 2009)

10,001



Employment by Industry



Labor Force by Education

H.S. Diploma	36.3%
Some College	15.5%
Associates	4.3%
Bachelors	6.0%
Graduate	2.4%

Largest Employers

Scott County School Board
Joy Technologies
Tempur Production
Results Duffield LLC
K-VA-T (Food City)

Industry

Educational Services
Manufacturing
Manufacturing
Call Center
Grocery Retailer

Employees

500-999
250-499
100-249
100-249
100-249

Data as of: 3rd Quarter 2008

Southwest Virginia

Scott County Public Schools

Superintendent: Mr. James Scott
261 E. Jackson Street, Gate City, VA 24251
(276) 386-6118

ELEMENTARY/MIDDLE SCHOOLS

Duffield Primary

663 Duff-Patt Road
Duffield, VA 24244
(276) 431 - 2244
Principal: Mr. Otis Bowen

Grades: K-4
2008-09 Fully Accredited
Fall 2008 enrollment: 348
<http://scott.k12.va.us/duffield/>

Dungannon Intermediate

PO Box 280
Dungannon, VA 24245
(276) 467-2281
Principal: Ms. Jennifer Meade

Grades: 4-7
2008-09: Fully Accredited
Fall 2008 enrollment: 79
<http://scott.k12.va.us/dungannon/>

Fort Blackmore Primary

214 Big Stoney Creek Road
Fort Blackmore, VA 24250
(276) 995-2471
Principal: Ms. Valerie Babb

Grades: K-3
2008-09: Fully Accredited
Fall 2008 enrollment: 99
<http://scott.k12.va.us/fortblackmore/>

Gate City Middle

170 Harry Fry Drive
Gate City, VA 24251
(276) 386-6065
Principal: Mr. John Ferguson

Grades: 7-9
2008-09: Fully Accredited
Fall 2008 enrollment: 531
<http://scott.k12.va.us/gcms/>

Hilton Elementary

303 Academy Road
Hiltons, VA 24258
(276) 386-7430
Principal: Mr. Tim Spicer

Grades: K-6
2008-09: Fully Accredited
Fall 2008 enrollment: 175
<http://scott.k12.va.us/hilton/>

Nickelsville Elementary

PO Box 136
Nickelsville, VA 24271
(276) 479-2646
Principal: Ms. Kelsey Taylor

Grades: K-7
2008-09: Fully Accredited
Fall 2008 enrollment: 282
<http://scott.k12.va.us/nickelsville/>

Rye Cove Intermediate

RT 4 Box 59
Clinchport, VA 24244
(276) 940-2322
Principal: Ms. Renee' Dishner

Grades: 5-7
2008-09: Fully Accredited
Fall 2008 enrollment: 168
<http://scott.k12.va.us/rci/>

Shoemaker Elementary

125 Shoemaker Drive
Gate City, VA 24251
(276) 386-7002
Principal: Ms. Kathy Musick

Grades: K-6
2008-09: Fully Accredited
Fall 2008 enrollment: 534
<http://scott.k12.va.us/shoemaker/>

Weber City Elementary

322 Jennings Street
Weber City, VA 24290
(276) 386 - 7981
Principal: Mr. Jason Smith

Grades: K-6
2008-09: Fully Accredited
Fall 2008 enrollment: 433
<http://scott.k12.va.us/wces/>

Yuma Elementary

180 Grover Cleveland Lane, Gate City, VA 24251
(276) 386-3109
Principal: Mr. Sammy Parks

Grades: K-6
2008-09: Fully Accredited
Fall 2008 enrollment: 171
<http://scott.k12.va.us/yuma/>

Scott County Public Schools

Superintendent: Mr. James Scott
261 E. Jackson Street, Gate City, VA 24251
(276) 386-6118

HIGH SCHOOLS

Gate City High
178 Harry Fry Drive
Gate City, VA 24251
(276) 386-7522
Principal: Mr. Greg Ervin

Grades: 10-12
2008-09: Fully Accredited
Fall 2008 enrollment: 525
<http://scott.k12.va.us/gchs/>

Rye Cove High
164 Eagles Nest Lane
Duffield, VA 24244
(276) 940-2701
Principal: Ms. Reagan Mullins

Grades: 8-12
2008-09: Fully Accredited
Fall 2008 enrollment: 312
<http://scott.k12.va.us/rchs/>

Twin Springs High
273 Titan Lane
Nickelsville, VA 24271
(276) 479-2185
Principal: Mr. Mike Lane

Grades: 8-12
2008-09: Fully Accredited
Fall 2008 enrollment: 306
<http://scott.k12.va.us/tshs/>

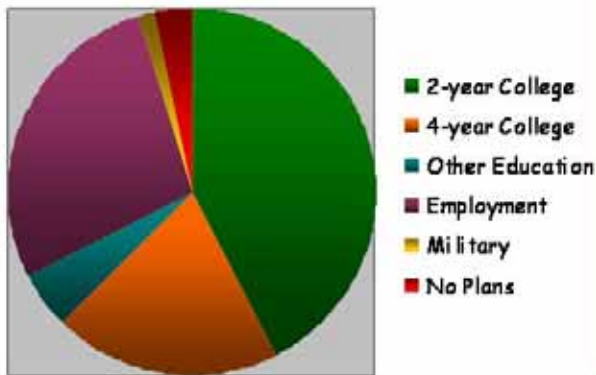
VOCATIONAL SCHOOLS

Scott County Career & Technical Center
150 Broadwater Avenue
Gate City, VA 24251
(276) 386-6515
Principal: Mr. Ralph Quesinberry

<http://scott.k12.va.us/voc/>

Program offerings: Automotive Servicing
Technology, Building Trades, Computer Networking,
Cosmetology, Electricity & Cabling, Culinary Arts,
Graphic Imaging Technology, Horticulture,
Manufacturing Technology, Marketing, Masonry,
Practical Nursing and Welding.

Post High School Graduation Plans



LOCAL COLLEGES

Mountain Empire Community College
Southwest Virginia Community College
Virginia Highlands Community College
University of Virginia at Wise
Emory and Henry College
Virginia Intermont College
King College
East Tennessee State University

Southwest Virginia