

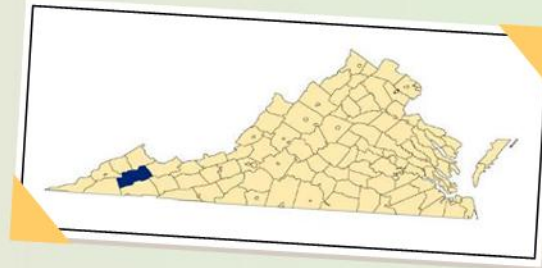
Russell County

www.russellcountyva.us

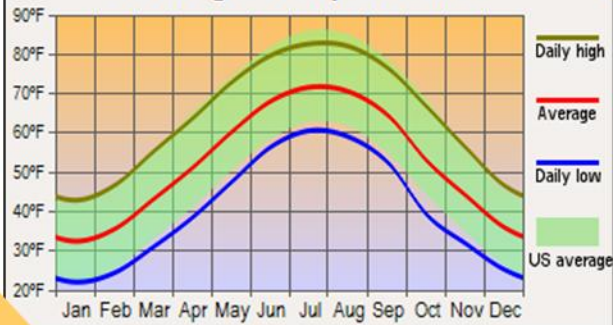
Southwest Virginia

| | |
|----------------------------------|---------------------|
| County seat: | Lebanon |
| Area: | 475 mi ² |
| Population (2010): | 28,897 |
| Median Age (2010): | 43.0 |
| Average Family Size: | 2.84 |
| Median Home Value: | \$82,400 |
| Median Household Income (2010): | \$33,221 |
| Unemployment Rate (Aug 2011): | 9.6% |
| % Employment Growth (2009-2010): | -3.7% |
| Average Commute Time: | 26.8 min |
| Cost-of-Living Index: | 87.5* |

* Johnson City TN (the closest reporting metro area)



Average Temperatures



Geography

Towns & Communities: Castlewood, Cleveland, Dante, Dickensonville, Elk Garden, Honaker, Lebanon, Rosedale, Saint Paul, Swords Creek

Bodies of Water: Clinch River

Major Roads: US 19, US 63, US 65, US 67, US 71 US 80, US 82

Climate

| | |
|----------------------------|-------------------------------------|
| Average Temperature | Average Annual Precipitation |
| January -35°F | Rainfall - 43.1" |
| July -74°F | Snowfall - 21.0" |

Russell County

2010 Population: 28,897

Gender Distribution:

Male - 49.0%
Female - 51.0%

Ethnic Distribution:

White - 97.8%
Black - 0.8%
American Indian - 0.2%
Asian - 0.2%
Native Pacific Islander - 0%
Other - 1.0%
Hispanic (of any race) - 1.0%

* Estimate

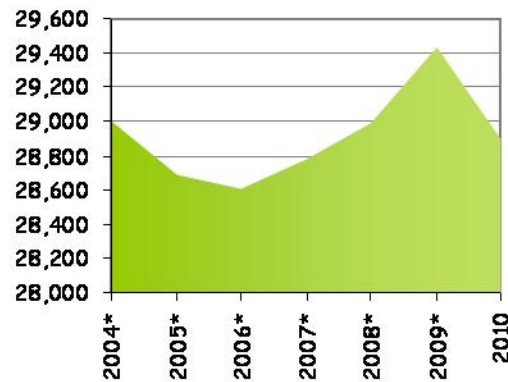
Marital Status (Ages 15+):

Never Married - 18.2%
Married - 60.3%
Separated/Divorced - 12.8%
Widowed - 8.7%

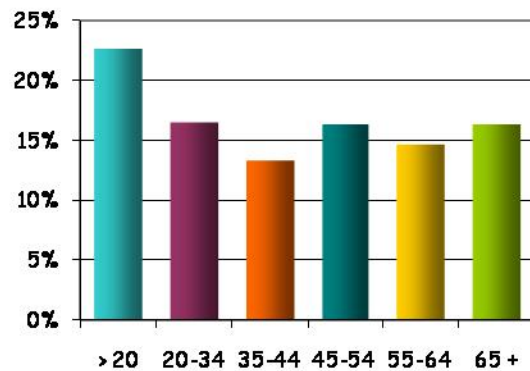
Households:

Families - 71.5%
Families w/ Children - 28.3%
Living Alone - 25.2%

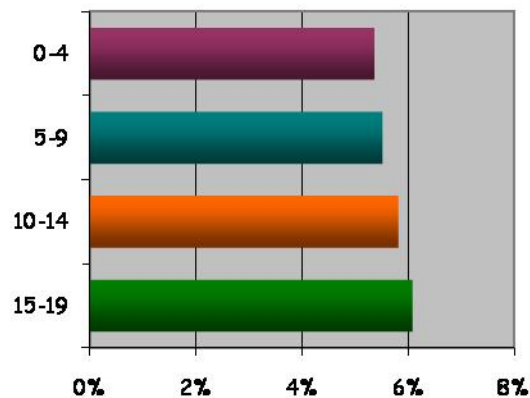
Population



Distribution by Age



Distribution by Age (Under 20)



Russell County

www.russellcountyva.us

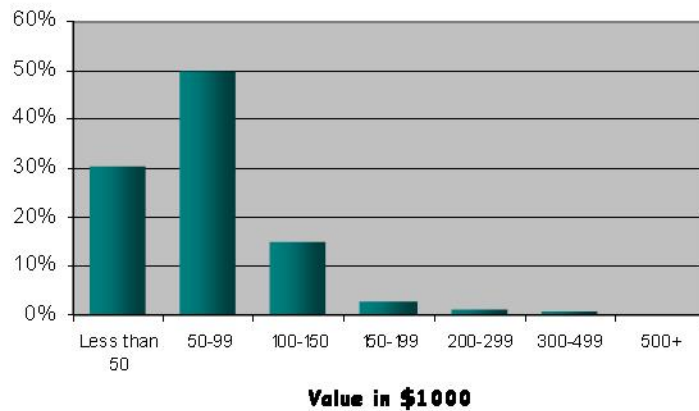
Housing:

Occupied Housing - 88.0%
 Occupied by Owner - 75.9%
 Occupied by Renter - 24.1%
 Vacant Housing - 12.0%

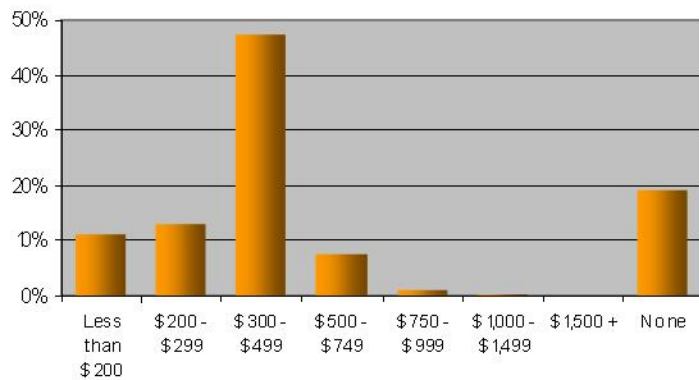
Median Home Value - \$82,400
 Median Monthly Rent - \$455

Median Ownership Costs - \$749
 (with a mortgage)
 Median Ownership Costs - \$232
 (without a mortgage)

Russell County: Home Value



Russell County: Monthly Rent



Cost of Living Index - 2nd Quarter 2011



On the Cost of Living Graph, the National Average is set to zero. The numbers on the horizontal axis represent the percent difference in the cost of an item in the region versus the National Average cost.

* The closest reporting metro area

Russell County

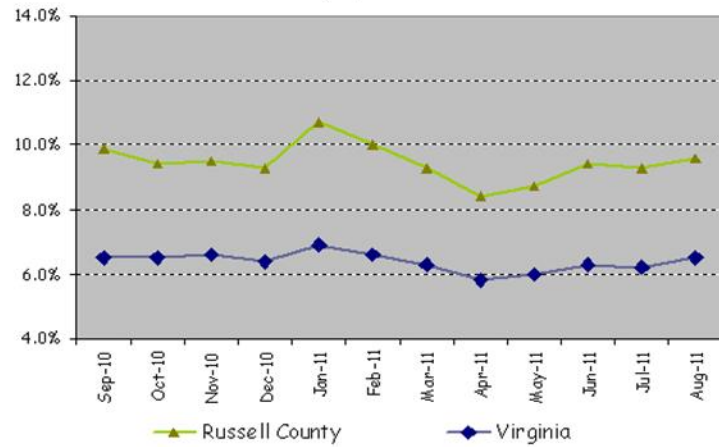
www.russellcountyva.us

Southern Piedmont of Southwest Virginia

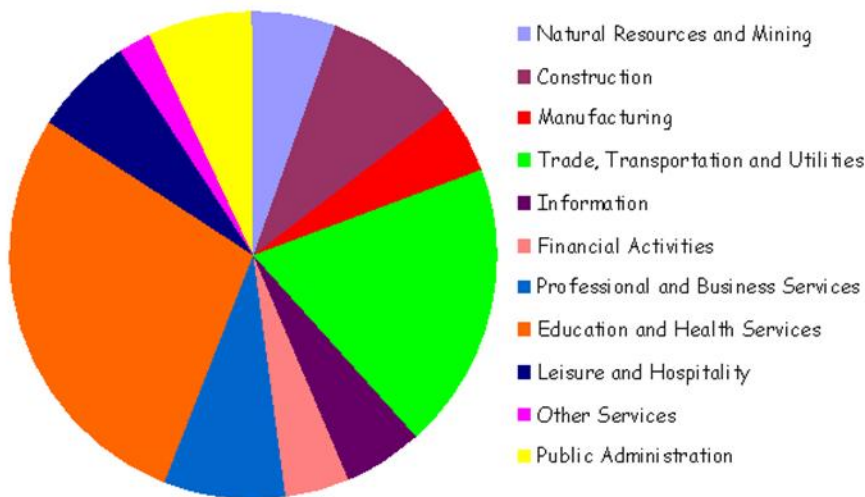
Civilian Labor Force (August 2011)

12,122

Unemployment Rate



Employment by Industry



Labor Force by Education

| | |
|--------------|-------|
| H.S. Diploma | 35.5% |
| Some College | 17.0% |
| Associates | 8.1% |
| Bachelors | 6.3% |
| Graduate | 3.2% |

Largest Employers

| Largest Employers | Industry | Employees |
|---------------------------------|----------------------|-----------|
| Russell County Schools | Educational Services | 250-499 |
| A T & T | Telecommunications | 250-499 |
| Lear Operations Corporation | Manufacturing | 250-499 |
| Mountain States Health Alliance | Hospital | 250-499 |
| Wal Mart | Retail | 250-499 |

Data as of: 1st Quarter 2011

Russell County Public Schools

Superintendent: Dr. C. Michael Puckett
P.O. Box 8, Lebanon, VA 24266
(276) 889-6500

ELEMENTARY/MIDDLE SCHOOLS

Belfast/Elk Garden Elementary

P.O. Box G
Rosedale, VA 24280
(276) 880-2283 or -1062
Principal: Georgia McCoy

Grades: K-6
2010-11: Fully accredited
Fall 2010 enrollment: 194
www.russell.k12.va.us/eges/

Castlewood Elementary

242 Blue Devil Circle
Castlewood, VA 24224
(276) 762-2315
Principal: Kim Hooker

Grades: PK-7
2010-11: Fully accredited
Fall 2010 enrollment: 472
www.russell.k12.va.us/ces/

Cleveland Elementary

5168 Cleveland Road
Cleveland, VA 24225
(276) 889-6534
Principal: Larry W Rasnake

Grades: K-7
2010-11: Fully accredited
Fall 2010 enrollment: 136
www.russell.k12.va.us/cles/

Copper Creek Elementary

23849 US Highway 58
Castlewood, VA 24224
(276) 794-9306
Principal: Tony Carrier

Grades: PK-5
2010-11: Fully accredited
Fall 2010 enrollment: 128
www.russell.k12.va.us/cces/

Givens/Swords Creek Elementary

P.O. Box 219 / P.O. Box 129
Swords Creek, VA 24649
(276) 991-0001 or -0016
Principal: Allison Steele

Grades: PK-2 / 3-7
2010-11: Fully accredited
Fall 2010 enrollment: 85 / 114
www.russell.k12.va.us/sces/

Honaker Elementary

P.O. Box 744
Honaker, VA 6301
(276) 873-6301
Principal: Gary Hess

Grades: PK-7
2010-11: Fully accredited
Fall 2010 enrollment: 665
www.russell.k12.va.us/hes/

Lebanon Primary

919 East Main Street
Lebanon, VA 24266
(276) 889-4507
Principal: Rita Street

Grades: PK-3
2010-11: Fully accredited
Fall 2010 enrollment: 347
www.russell.k12.va.us/lps/

Lebanon Elementary

P.O. Box 668
Lebanon, VA 24266
(276) 889-6531
Principal: Phillip Henley

Grades: 4-6
2010-11: Fully accredited
Fall 2010 enrollment: 335
www.russell.k12.va.us/les/

Lebanon Middle

131 West Main Street
Lebanon, VA 24266
(276) 889-6548
Principal: Joseph R Long

Grades: 7-8
2010-11: Fully accredited
Fall 2010 enrollment: 322
www.russell.k12.va.us/lms/

Russell County Public Schools

Superintendent: Dr. C. Michael Puckett
P.O. Box 8, Lebanon, VA 24266
(276) 889-6500

HIGH SCHOOLS

Castlewood High

Hwy 58, Memorial Drive
Castlewood, VA 24224
(276) 762-9449
Principal: Butch Kiser

Grades: 8-12
2010-11: Fully accredited
Fall 2010 enrollment: 322
www.russell.k12.va.us/chs/

Honaker High

P.O. Box 764
Honaker, VA 24260
(276) 873-6363
Principal: Tony Bush

Grades: 8-12
2010-11: Fully accredited
Fall 2010 enrollment: 509
www.russell.k12.va.us/hhs/

Lebanon High

P.O. Box 217
Lebanon, VA 24266
(276) 889-6540
Principal: Tony Dodi

Grades: 9-12
2010-11: Fully accredited
Fall 2010 enrollment: 704
www.russell.k12.va.us/lhs/

VOCATIONAL SCHOOLS

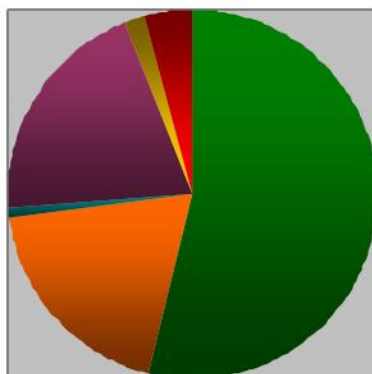
Russell County Career & Technical Center

Career Tech Drive
Lebanon, VA 24266
(276) 889-6550
Principal: Brian Hooker

www.russell.k12.va.us/rcctc/

Course offerings: Auto Body Repair, Auto Mechanics, Building Maintenance, Building Trades, Cosmetology, Criminal Justice, LPN, Manufacturing Technology, Masonry, Occupational Foods, Veterinary Assistant and Welding.

Post High School Graduation Plans



- 2-year College
- 4-year College
- Other Education
- Employment
- Military
- No Plans

LOCAL COLLEGES

Southwest Virginia Community College
Virginia Highlands Community College
University of Virginia at Wise
Emory and Henry College
Virginia Intermont College
Appalachian School of Law