

Pulaski County

www.pulaskicounty.org

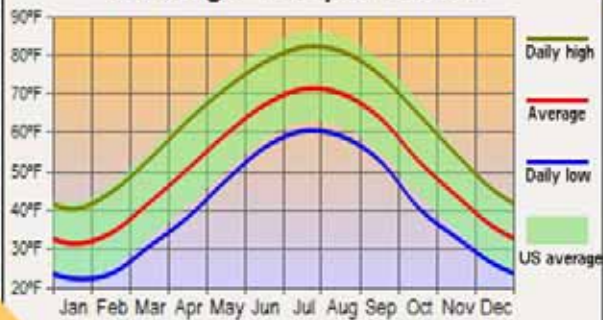
County seat:	Pulaski
Area:	321 mi ²
Population (2008):	34,391
Median Age (2007):	41.7
Average Family Size:	2.80
Median Home Value:	\$80,000
Median Household Income (2005):	\$35,014
Unemployment Rate (March 2009):	14.4%
% Employment Growth (2006-2007):	-5.6%
Average Commute Time:	21.3 min
Cost-of-Living Index:	97.9*

* Blacksburg, VA (the closest reporting metro area)



Southwest of Virginia

Average Temperatures



Climate

Average Temperature	Average Annual Precipitation
January -34°F	Rainfall -36.90 "
July -72°F	Snowfall -7.00 "

Geography

Towns & Communities: Allisonia, Back Creek, Belspring, Claytor Lake, Draper, Dublin, Fairlawn, Hiwassee, Lillydell, Little Creek, Mountain View, New River, Newbern, Parrott, Pulaski, Robinson Tract, Snowville

Bodies of Water: Claytor Lake, Gatewood Reservoir, New River

Major Roads: I 81, US 11, US 99, US 100, US 114

Pulaski County

2008 Population: 34,391*

Gender Distribution:

- Male - 49.2%
- Female - 50.8%

Ethnic Distribution:

- White - 92.2%
- Black - 6.3%
- American Indian - 0.2%
- Asian - 0.4%
- Native Pacific Islander - 0%
- Other - 0.9%
- Hispanic (of any race) - 1.3%

* Estimate

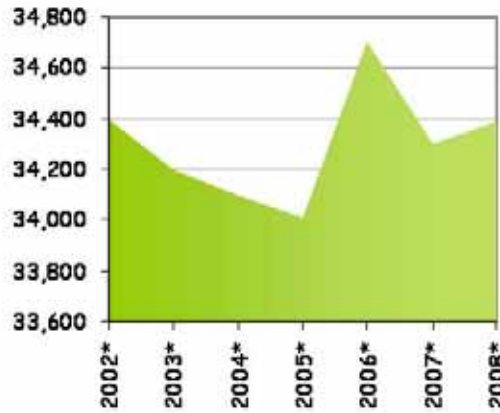
Marital Status (Ages 15+):

- Never Married - 17.5%
- Married - 60.5%
- Separated/Divorced - 13.1%
- Widowed - 8.9%

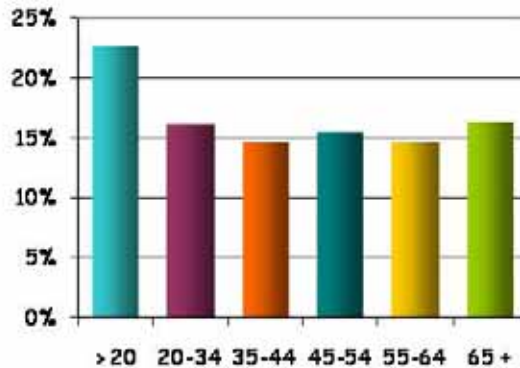
Households:

- Families - 69.3%
- Families w/ Children - 26.9%
- Living Alone - 27.0%

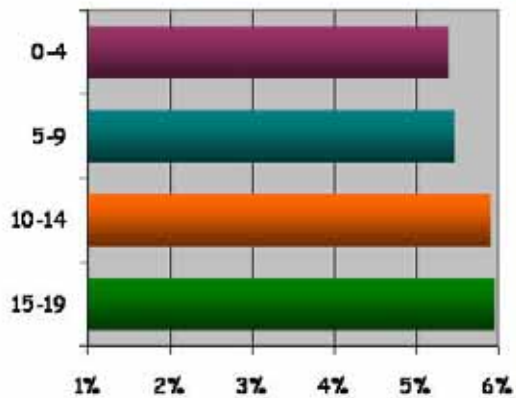
Population



Distribution by Age



Distribution by Age (Under 20)



Pulaski County

www.pulaskicounty.org

Summaries of Southwest Virginia

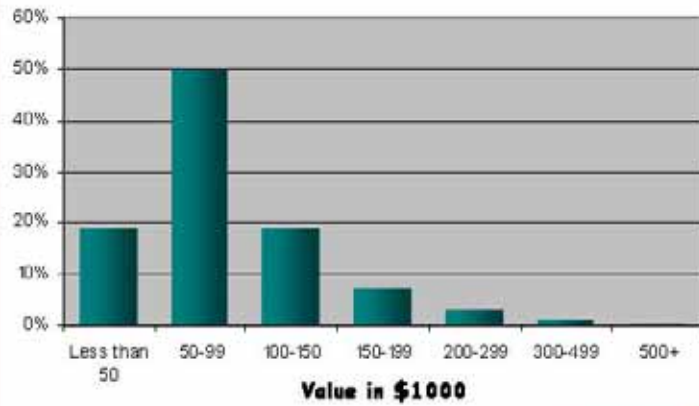
Housing:

Occupied Housing - 89.7%
 Occupied by Owner - 73.7%
 Occupied by Renter - 26.3%
 Vacant Housing - 10.3%
 For Recreational User - 4.5%

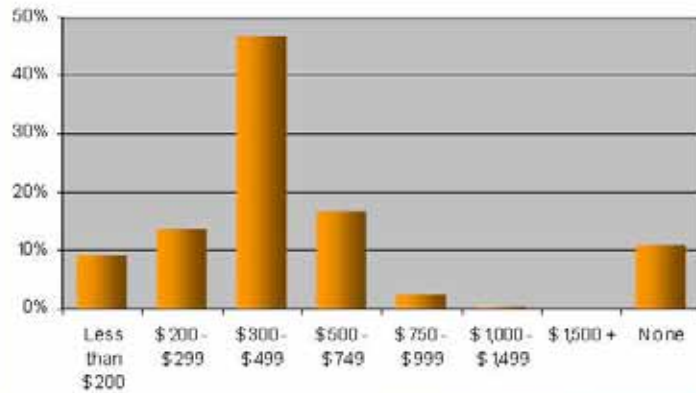
Median Home Value - \$80,000
 Median Monthly Rent - \$382

Median Ownership Costs - \$698
 (with a mortgage)
 Median Ownership Costs - \$194
 (without a mortgage)

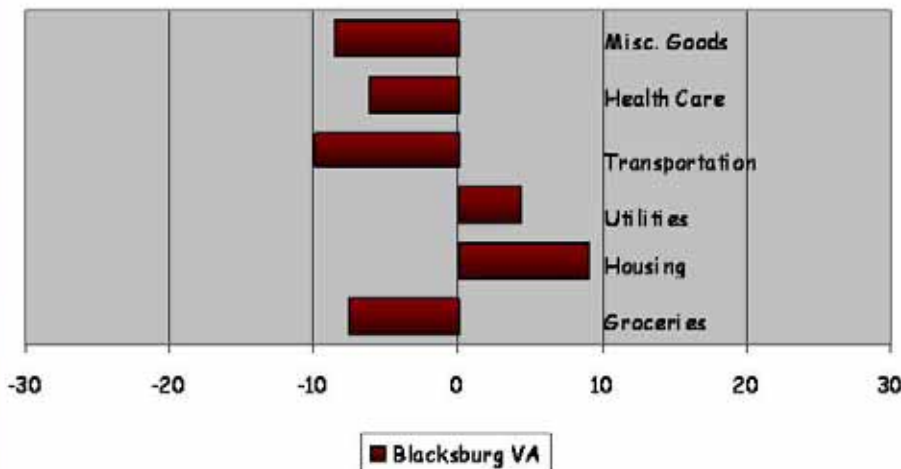
Pulaski County: Home Value



Pulaski County: Monthly Rent



Cost of Living Index - 1st Quarter 2009

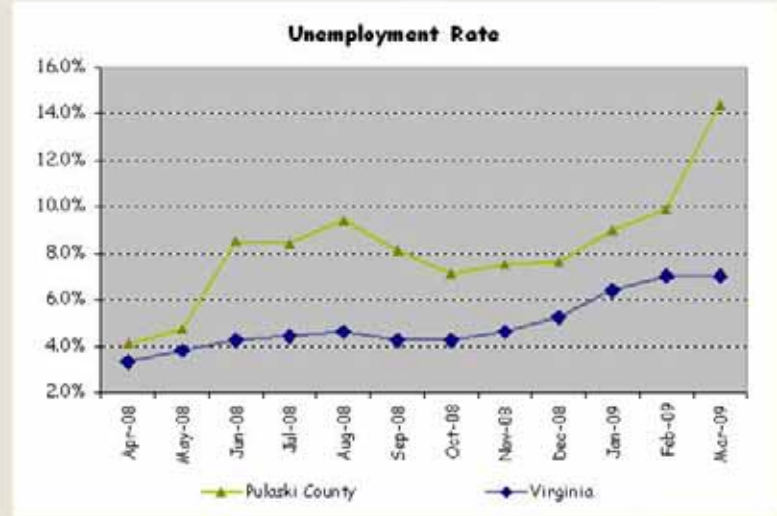


On the Cost of Living Graph, the National Average is set to zero. The numbers on the horizontal axis represent the percent difference in the cost of an item in the region versus the National Average cost.

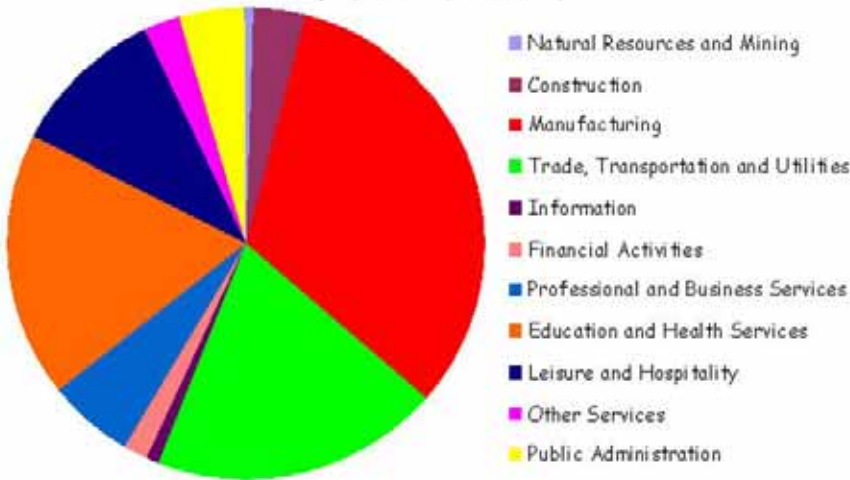
* The closest reporting metro area

Civilian Labor Force
(March 2009)

19,600



Employment by Industry



Labor Force by Education

H.S. Diploma	33.9%
Some College	20.0%
Associates	7.9%
Bachelors	8.0%
Graduate	4.5%

Largest Employers	Industry	Employees
Volvo Trucks	Manufacturing	1000+
Pulaski County School Board	Educational Services	500-999
Wal-Mart	Retail Sales	500-999
Pulaski Community Hospital	Hospital	250-499
New River Community College	Educational Services	250-499

Data as of: 3rd Quarter 2008

Pulaski County Public Schools

Superintendent: Dr. Donald Stowers
202 North Washington Avenue, Pulaski, VA 24301
(540) 994-2550

ELEMENTARY/MIDDLE SCHOOLS

Critzer Elementary
100 Critzer Drive
Pulaski, VA 24301
(540) 643-0274
Principal: Mr. Harold Malcolm

Grades: PK-5
2008-09: Fully Accredited
Fall 2008 enrollment: 391
www.pcva.us/schools/criz/

Dublin Elementary
600 Dunlap Road
Dublin, VA 24084
(540) 643-0337
Principal: Ms. Jennifer Wall

Grades: PK-5
2008-09: Fully Accredited
Fall 2008 enrollment: 580
www.pcva.us/schools/Des/

Dublin Middle
650 Giles Avenue
Dublin, VA 24084
(540) 643-0367
Principal: Ms. Robin Keener

Grades: 6-8
2008-09: Fully Accredited
Fall 2008 enrollment: 586
www.pcva.us/schools/DMS/

Newbern Elementary
5470 Lyons Road
Dublin, VA 24084
(540) 643-0639
Principal: Mr. Joseph Reed

Grades: PK-5
2008-09: Fully Accredited
Fall 2008 enrollment: 115
www.pcva.us/schools/NEW/

Pulaski Elementary
2004 Morehead Lane
Pulaski, VA 24301
(540)643-0737
Principal: Ms. Linda Edwards

Grades: PK-5
2008-09: Fully Accredited
Fall 2008 enrollment: 590
www.pcva.us/schools/pes/

Pulaski Middle
500 Pico Terrace
Pulaski, VA 24301
(540) 643-0767
Principal: Dr. Michael Perry

Grades: 6-8
2008-09: Fully Accredited
Fall 2008 enrollment: 480
www.pcva.us/schools/PMS/

Riverlawn Elementary
6671 Riverlawn Court
Radford, VA 24141
(540) 643-0748
Principal: Mr. John Bowler

Grades: PK-5
2008-09: Fully Accredited
Fall 2008 enrollment: 329
www.pcva.us/schools/RI V/

Snowville Elementary
4858 Lead Mine Road
Hiwassee, Va 24347
(540) 643-0766
Principal: Ms. Janis Carter

Grades: PK-5
2008-09: Fully Accredited
Fall 2008 enrollment: 203
www.pcva.us/schools/sno/snowville%20elementar.htm

Pulaski County High
5414 Cougar Trail
Dublin, Virginia 24084
(540) 643-0747
Principal: Mr. Rod Reedy

Grades: 9-12
2008-09: Fully Accredited
Fall 2008 enrollment: 1,575
www.pcva.us/schools/pchs/index.html

HIGH SCHOOLS

Pulaski County Public Schools

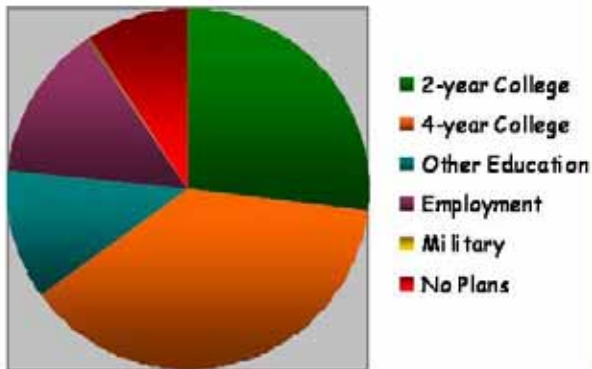
Superintendent: Dr. Donald Stowers
202 North Washington Avenue, Pulaski, VA 24301
(540) 643-0200

VOCATIONAL SCHOOLS

Pulaski County High School Technical Education Center
5414 Cougar Trail, Dublin, VA 24084
(540)643-0747
Director: Dr. Elaine Woolwine
www.pcva.us/schools/pchs/dept/teched/index.htm

Program offerings: Agriscience, Business Education, Technology, Trade & Industry, Family & Consumer Science, Marketing, Health Sciences, and Work Education

Post High School Graduation Plans



LOCAL COLLEGES

New River Community College
Wytheville Community College
Radford University
Virginia Tech
Bluefield College