

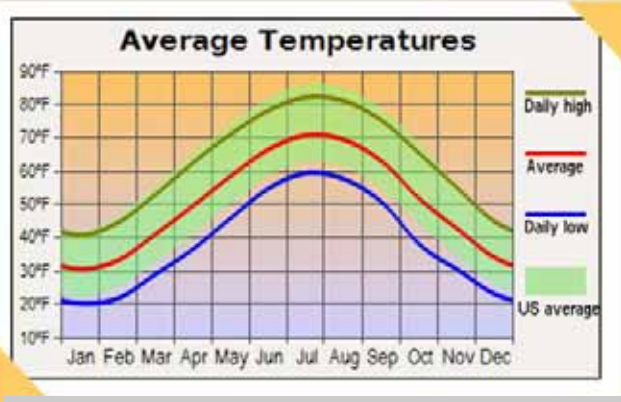
Montgomery County

www.montva.com

Southwest of SouthWest Virginia

County seat:	Christiansburg
Area:	388 mi ²
Population (2008):	90,517
Median Age (2007):	25.7
Average Family Size:	2.87
Median Home Value:	\$114,600
Median Household Income (2005):	\$36,853
Unemployment Rate (March 2009):	7.3%
% Employment Growth (2006-2007):	1.6%
Average Commute Time:	19.2 min
Cost-of-Living Index:	97.9*

* Blacksburg VA (the closest reporting metro area)



Geography

Towns & Communities: Blacksburg, Christiansburg, Elliston, Ironto, McCoy, Pilot, Riner, Shawsville

Bodies of Water: New River

Major Roads: I 81, US 8, US 11, US 111, US 114, US 117, US 232, US 412, US 460

Climate

Average Temperature	Average Annual Precipitation
January -31°F	Rainfall -38.00 "
July -71°F	Snowfall -20.00 "

2008 Population: 90,517*

Gender Distribution:

Male - 52.4%
Female - 47.6%

Ethnic Distribution:

White - 89.5%
Black - 4.1%
American Indian - 0.2%
Asian - 4.8%
Native Pacific Islander - 0.1%
Other - 1.3%
Hispanic (of any race) - 2.0%

* Estimate

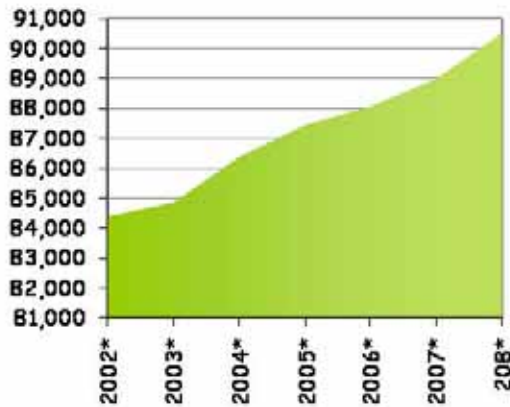
Marital Status (Ages 15+):

Never Married - 43.5%
Married - 44.0%
Separated/Divorced - 8.1%
Widowed - 4.4%

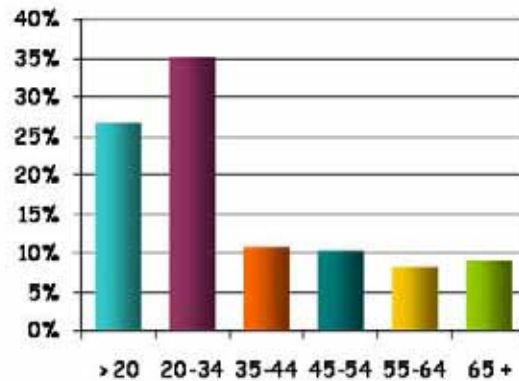
Households:

Families - 55.5%
Families w/ Children - 25.3%
Living Alone - 25.5%

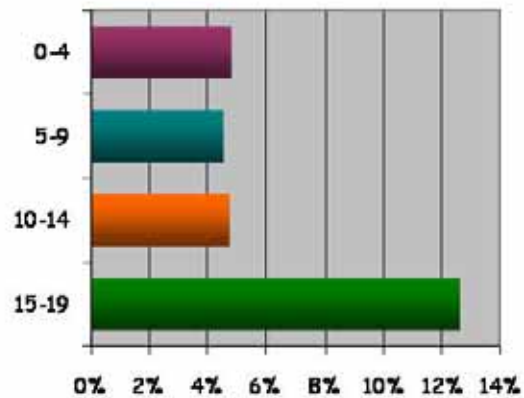
Population



Distribution by Age



Distribution by Age (Under 20)



Montgomery County

www.montva.com

Summaries of Southwest Virginia

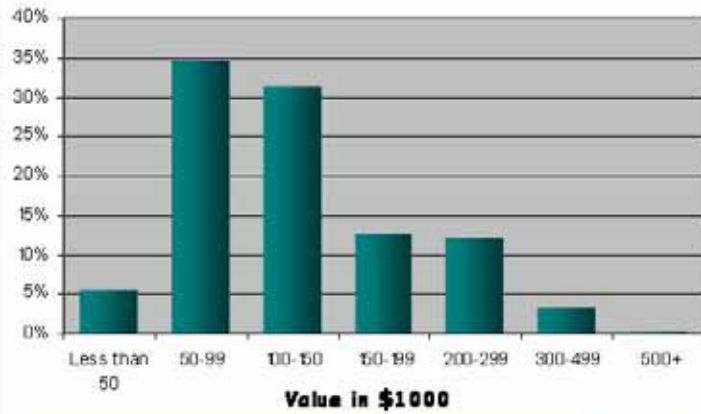
Housing:

Occupied Housing - 95.3%
 Occupied by Owner - 55.1%
 Occupied by Renter - 44.9%
 Vacant Housing - 4.7%
 For Recreational User - 0.5%

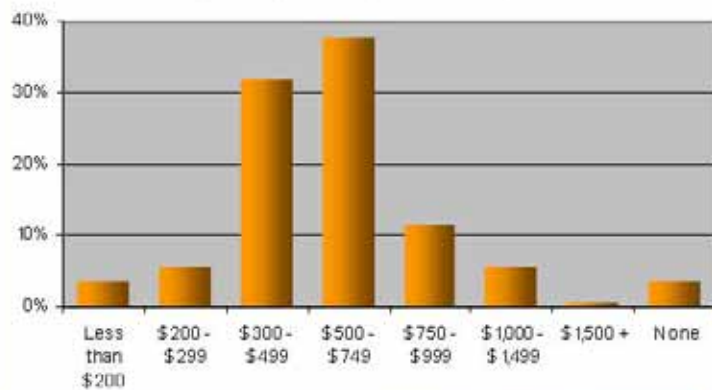
Median Home Value - \$114,600
 Median Monthly Rent - \$535

Median Ownership Costs - \$912
 (with a mortgage)
 Median Ownership Costs - \$219
 (without a mortgage)

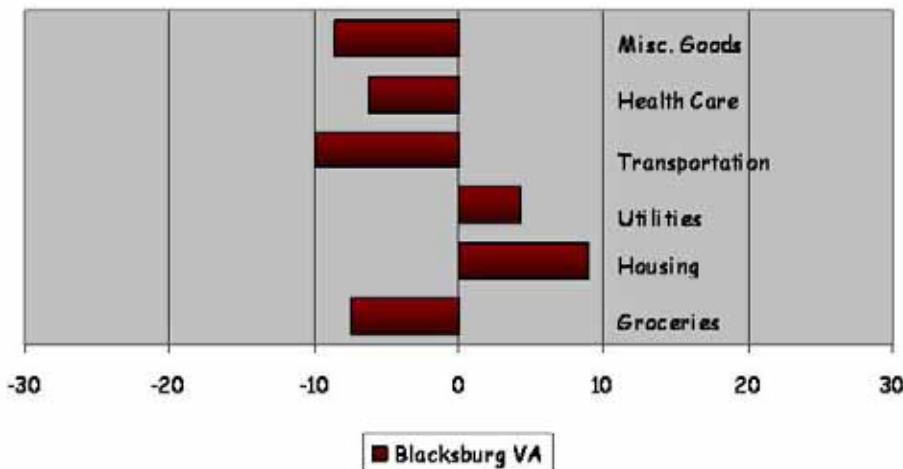
Montgomery County: Home Value



Montgomery County: Monthly Rent



Cost of Living Index - 1st Quarter 2009

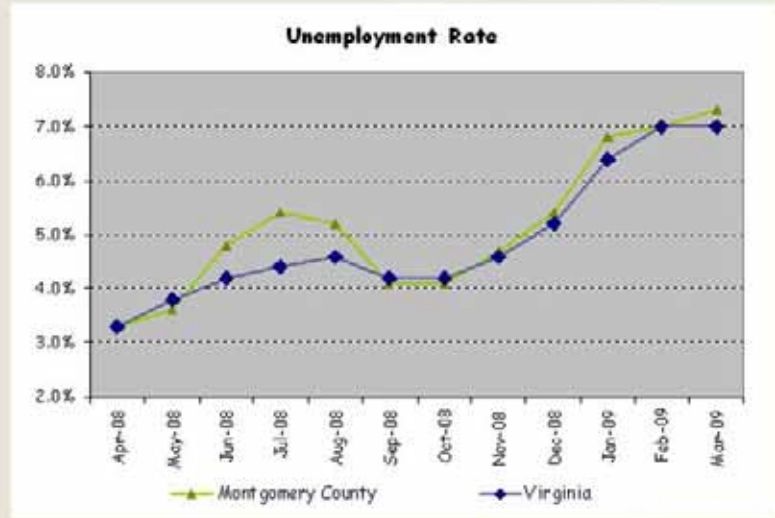


On the Cost of Living Graph, the National Average is set to zero. The numbers on the horizontal axis represent the percent difference in the cost of an item in the region versus the National Average cost.

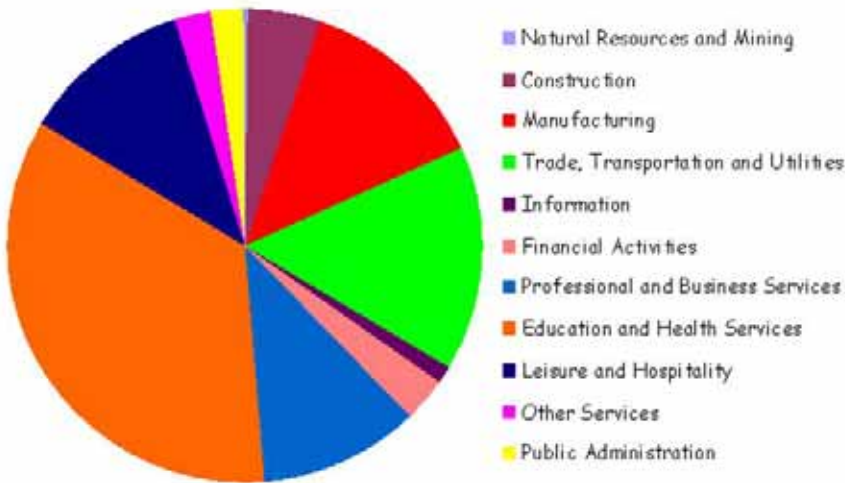
* The closest reporting metro area

Civilian Labor Force
(March 2009)

46,409



Employment by Industry



Labor Force by Education

H.S. Diploma	23.7%
Some College	17.5%
Associates	5.7%
Bachelors	17.3%
Graduate	18.6%

Largest Employers

Virginia Tech
 Montgomery County School Board
 Alliant Techsystems, I.n.c
 Moog Inc
 Carilion New River Valley Medical Center

Industry

Educational Services 1000+
 Educational Services 1000+
 Manufacturing 1000+
 Manufacturing 1000+
 Hospital 500-999

Employees

Data as of: 3rd Quarter 2008

Montgomery County Public Schools

Superintendent: Dr. Tiffany Anderson
200 Junkin Street, Christiansburg, VA 24073
(540) 382-5100

Elementary/Middle Schools

Auburn Elementary

4315 Riner Road
Riner, VA 24149
(540) 381-6521
Principal: Mr. Kenneth Moles
Grades: PK-5
2008-09: Fully Accredited
Fall 2008 enrollment: 592
www.mcps.org/aes/

Auburn Middle

4069 Riner Road
Riner, VA 24149
(540) 382-5165
Principal: Ms. Guylene Wood-Setzer
Grades: 6-8
2008-09: Fully Accredited
Fall 2008 enrollment: 267
www.mcps.org/ams/

Belview Elementary

3187 Pepper's Ferry Road
Radford, VA 24141
(540) 633-3200
Principal: Ms. Rhonda Baker
Grades: PK-5
2008-09: Fully Accredited
Fall 2008 enrollment: 253
www.mcps.org/belview/

Blacksburg Middle

3109 Price's Fork Road
Blacksburg, VA 24060
(540) 951-5800
Principal: Mr. Danny Knott
Grades: 6-8
2008-09: Fully Accredited
Fall 2008 enrollment: 865
www.mcps.org/bms/

Christiansburg Elementary

160 Wades Lane
Christiansburg, VA 24073
(540) 382-5172
Principal: Mr. Jason Garretson
Grades: 3-5
2008-09: Fully Accredited
Fall 2008 enrollment: 458
www.mcps.org/ces/

Christiansburg Middle

1205 Buffalo Drive, NW
Christiansburg, VA 24073
(540) 394-2180
Principal: Ryan Hitchman
Grades: 6-8
2008-09: Accr. w/ Warning
Fall 2008 enrollment: 855
www.mcps.org/cms/

Christiansburg Primary

240 Betty Drive
Christiansburg, VA 24073
(540) 382-5175
Principal: Mr. Oliver Lewis
Grades: PK-2
2008-09: Fully Accredited
Fall 2008 enrollment: 485
www.mcps.org/cps/

Elliston-Lafayette Elementary

5201 Tango Lane
Elliston, VA 24087
(540) 268-2291
Principal: Ms. Denise Boyle
Grades: PK-5
2008-09: Fully Accredited
Fall 2008 enrollment: 320
www.mcps.org/elliston/

Falling Branch Elementary

735 Falling Branch Road
Christiansburg, VA 24073
(540) 381-6145
Principal: Ms. Julie Vanidestine
Grades: PK-5
2008-09: Fully Accredited
Fall 2008 enrollment: 566
www.mcps.org/fbranch/

Gilbert Linkous Elementary

813 Tom's Creek Road
Blacksburg, VA 24060
(540) 951-5726
Principal: Ms. Carol Kahler
Grades: K-5
2008-09: Fully Accredited
Fall 2008 enrollment: 378
www.mcps.org/linkous/

Harding Avenue Elementary

429 Harding Avenue
Blacksburg, VA 24060
(540) 951-5732
Principal: Ms. Meggan Marshall
Grades: K-5
2008-09: Fully Accredited
Fall 2008 enrollment: 258
www.mcps.org/harding/

Kipps Elementary

2801 Price's Fork Road
Blacksburg, VA 24060
(540) 951-5760
Principal: Mr. Brian Kitts
Grades: PK-5
2008-09: Fully Accredited
Fall 2008 enrollment: 557
www.mcps.org/kipps/

Montgomery County Public Schools

Superintendent: Dr. Tiffany Anderson
 200 Junkin Street, Christiansburg, VA 24073
 (540) 382-5100

Margaret Beeks Elementary
 709 Airport Road
 Blacksburg, VA 24060
 (540) 951-5700
 Principal: Mr. Micah Mefford
 Grades: PK-5
 2008-09: Fully Accredited
 Fall 2008 enrollment: 412
www.mcps.org/mbeeks/

Price's Fork Elementary
 4237 Price's Fork Road
 Blacksburg, VA 24060
 (540) 951-5736
 Principal: Ms. Dollie Cottrill
 Grades: PK-5
 2008-09: Fully Accredited
 Fall 2008 enrollment: 216
www.mcps.org/pfork/

Shawsville Elementary
 4390 Riffe Street
 Elliston, VA 24087
 (540) 268-2208
 Principal: Mr. Chris Widrig
 Grades: PK-5
 2008-09: Fully Accredited
 Fall 2008 enrollment: 248
www.mcps.org/ses/

Shawsville Middle
 4179 Old Town Road
 Shawsville, VA 24162
 (540) 368-2262
 Principal: Mr. David Dickenson
 Grades: 6-8
 2008-09: Accr. w/ Warning
 Fall 2008 enrollment: 206
www.mcps.org/sms/

High Schools

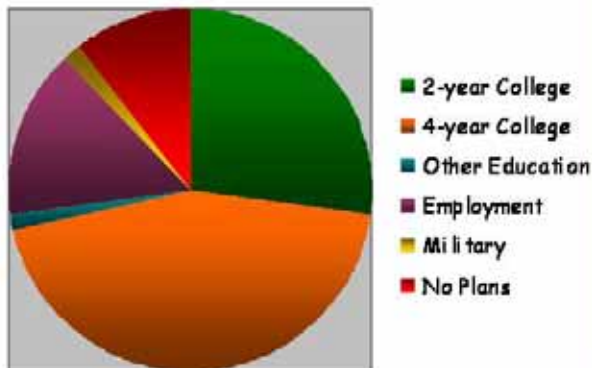
Auburn High
 4163 Riner Road
 Riner, VA 24149
 (540) 382-5160
 Principal: Mr. Carl Pauli
 Grades: 9-12
 2008-09: Fully Accredited
 Fall 2008 enrollment: 401
www.mcps.org/auburn/

Blacksburg High
 520 Patrick Henry Drive
 Blacksburg, VA 24060
 (540) 951-5706
 Principal: Mr. Michael Hurst
 Grades: 9-12
 2008-09: Fully Accredited
 Fall 2008 enrollment: 1,133
www.mcps.org/bhs/

Christiansburg High
 100 Independence Blvd.
 Christiansburg, VA 24073
 (54) 382-5178
 Principal: Ms. Rhonda Poindexter
 Grades: 9-12
 2008-09: Fully Accredited
 Fall 2008 enrollment: 1,068
<http://chs.mcps.org/>

Eastern Montgomery High
 4695 Crozier Road
 Elliston, VA 24087
 (540) 268-3010
 Principal: Mr. Nelson Simpkins
 Grades: 9-12
 2008-09: Fully Accredited
 Fall 2008 enrollment: 320
www.mcps.org/emhs/

Post High School Graduation Plans



LOCAL COLLEGES

New River Community College
 Radford University
 Virginia Tech
 Roanoke College
 Hollins University
 Ferrum College